



Peacock



Red Admiral

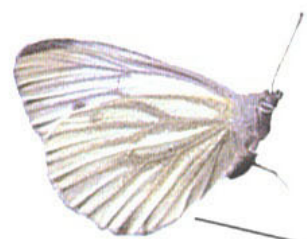


Small Tortoiseshell

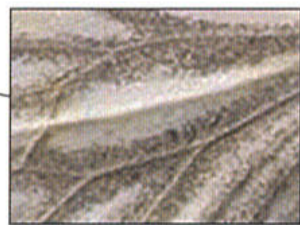


Painted Lady

Peacock, Red Admiral, Small Tortoiseshell and Painted Lady are all immigrants to Shetland. The Painted Lady and Red Admiral are recorded annually, sometimes in large numbers, but the Small Tortoiseshell and Peacock are much scarcer

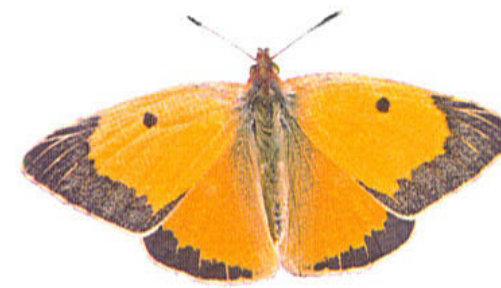


Green-veined White



Small White

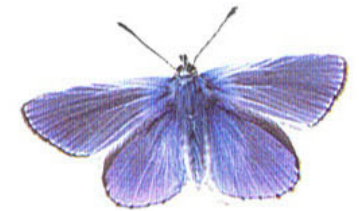
The Green-veined White and Small White could easily be confused with their more common cousin, the Large White. Note their smaller size, however, and different wing-markings, especially the dark green veins on the underside of the Green-veined White (see inset), which breeds as close as Orkney.



Clouded Yellow

The Clouded Yellow is an immigrant occurring in vast numbers in Britain in some years. There are no recent records from Shetland but in a good summer it could be expected to occur.

The Common Blue could still survive unnoticed in some more remote parts of Shetland. It tends to favour flower-rich meadows. We would also welcome any historical records of this species.



Common Blue



Small Heath



Meadow Brown



Small Copper

Small Heath, Meadow Brown and Small Copper are all essentially brown butterflies. The Meadow Brown is quite a large butterfly and breeds in Orkney. The other two are smaller, and occur on mainland Scotland. There have been unconfirmed reports of all three species in Shetland.

Camberwell Beauty, Swallowtail, Monarch - This trio of spectacular butterflies (shown overleaf) have been recorded less than a handful of times in the islands. The former two are visitors from the Continent, but the Monarch breeds in North America. It seems almost unbelievable that a butterfly can cross the Atlantic unscathed.

All pictures of butterflies in this leaflet are reproduced at life size apart from those on the back which are half their actual size.